

2025-2026



**Dame Elizabeth**  
Cadbury School

Y E A R 9

# GUIDED OPTIONS BOOKLET

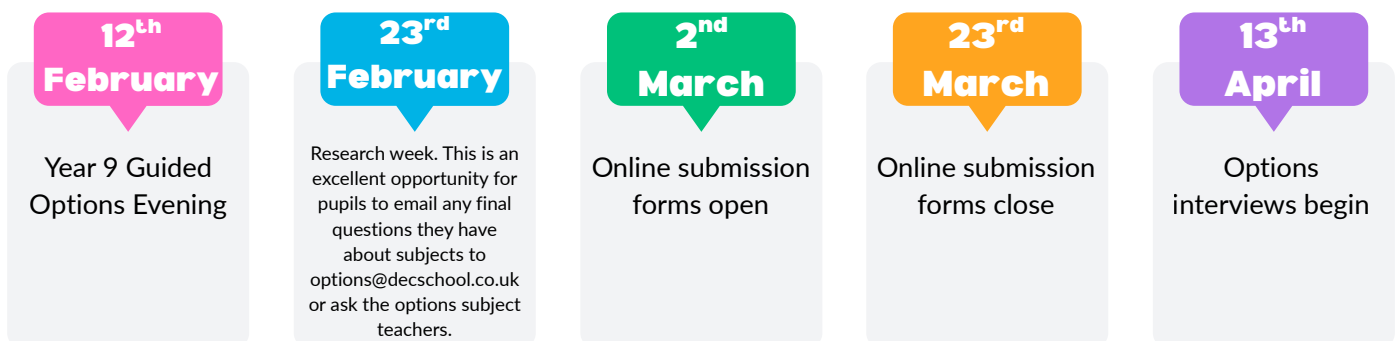


**Matrix**  
Academy Trust

# Welcome to the Year 9 Guided Options Information Page.

Here you will find information about the key events in your Guided Options process. Selecting the courses that you will study at GCSE is the exciting first step in your journey towards your chosen career or vocation.

The timeline of these events is shown below:

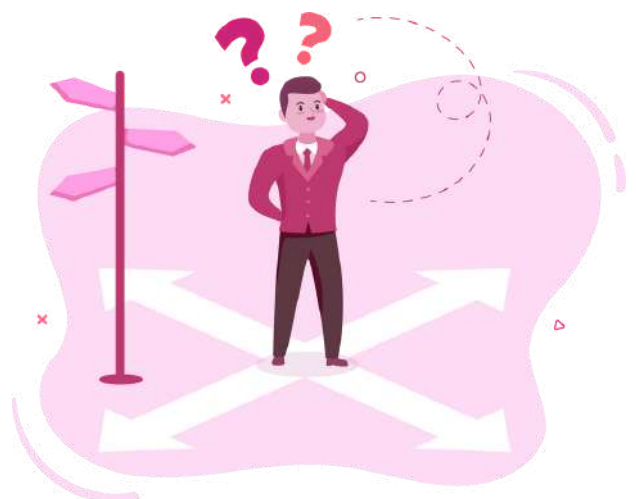


The Year 9 Guided Options Booklet is the starting point for your course selection. You should read it all carefully to learn about the wide range of courses that we offer.

The first pages outline the details of the core subjects, studied by all students. English Language, English Literature, Mathematics and science (combined or triple science) are compulsory GCSEs. You will also continue to study PE and PSHE as non-examined national curriculum subjects.

In addition to the core subjects, you can choose 4 option block subjects. There are some restrictions to your choices and these are identified on the Year 9 Guided Options form. For example, all students must study either history or geography. As many students as possible should study a modern foreign language (French or German), to maximise the number of students who achieve the EBacc. Doing a language at GCSE can be great for your personal and professional growth as it can teach you a number of skills that you can use later on in life. The EBacc is a suite of subjects that 'keeps young people's options open for further study and future careers' which is why at Dame Elizabeth Cadbury School, we have EBACC subjects at our core.

The decisions that you make may have significant implications for your future. We will support you throughout the Year 9 Guided Options process. You have already had some careers information through your personal development curriculum (PSHE). There is a pathways section on our website so you and your parents can find out more. There will also be an opportunity to talk to teachers through on the Year 9 Guided Options parents evening. Take time to talk to your parents and teachers before you make your final decision. In the end you should choose subjects that you enjoy and can succeed in. Remember you can always ask for help and guidance.



# DEC 10 STEPS TO SUCCESS



## STEP 1

In the Spring term, begin thinking about what kind of job you'd like to do and what subjects you may need

## STEP 2

Attend Guided Options Evening on 12<sup>th</sup> February 2026 4-7pm

## STEP 3

Consider future career aspirations, after completing more research

## STEP 4

Find out more information about each subject

## STEP 5

Discuss your options with parents or carers, not just your friends

## STEP 6

Use 'Research Week' (23<sup>rd</sup>-27<sup>th</sup> February 2026) to email any questions that you still want to ask, after looking at the website information. All emails should go to [options@decschool.co.uk](mailto:options@decschool.co.uk)

## STEP 7

List your initial choices on a piece of paper, keep it in a safe place and come back to it in a few days

## STEP 8

On 2<sup>nd</sup> March 2026, return to the website to submit final options applications. This closes on 23<sup>rd</sup> March 2026

## STEP 9

In the spring term, you may have a one to one interview and will then receive a letter to confirm your choices

## STEP 10

Join Year 10 and start studying your chosen courses!

# GCSE ENGLISH LITERATURE

English Literature is a challenging course that is focused on students' ability to personally engage and critically evaluate texts. The beauty in this qualification is that students are able to engage with such a wide range of texts: Shakespearian tragic heroes; devilish Victorian villains; timeless plays and poetry from different places and time. This is one of the only courses that allows students to form their own opinions and rewards students for their personal responses. We can guarantee that it will introduce you to characters and stories that will stay with you long after you've left school.



How is the course assessed?

Paper 1: Shakespeare and 19th Century Prose

What is assessed?

- Shakespeare plays, Macbeth
- The 19th-century novel, Jekyll and Hyde

How it is assessed:

- Written exam: 1 hour 45 minutes
- 64 marks
- 40% of GCSE

Paper 2: Modern Text and Poetry

What is assessed?

- Modern prose or drama texts; An Inspector Calls
- The poetry anthology; Power and Conflict Poetry

- Unseen poetry

How it is assessed:

- Written exam: 2 hour 15 minutes
- 96 Marks
- 60% of GCSE

Career Progression

- Writer
- Academic Librarian
- Secondary Teacher
- Lecturer
- Book/Film critic
- Director/screen writer
- Theatre manager
- Screenwriter
- Historian
- Publisher
- Marketing

**Exam Board: AQA**

**Faculty Leader: Mrs L Kendall**

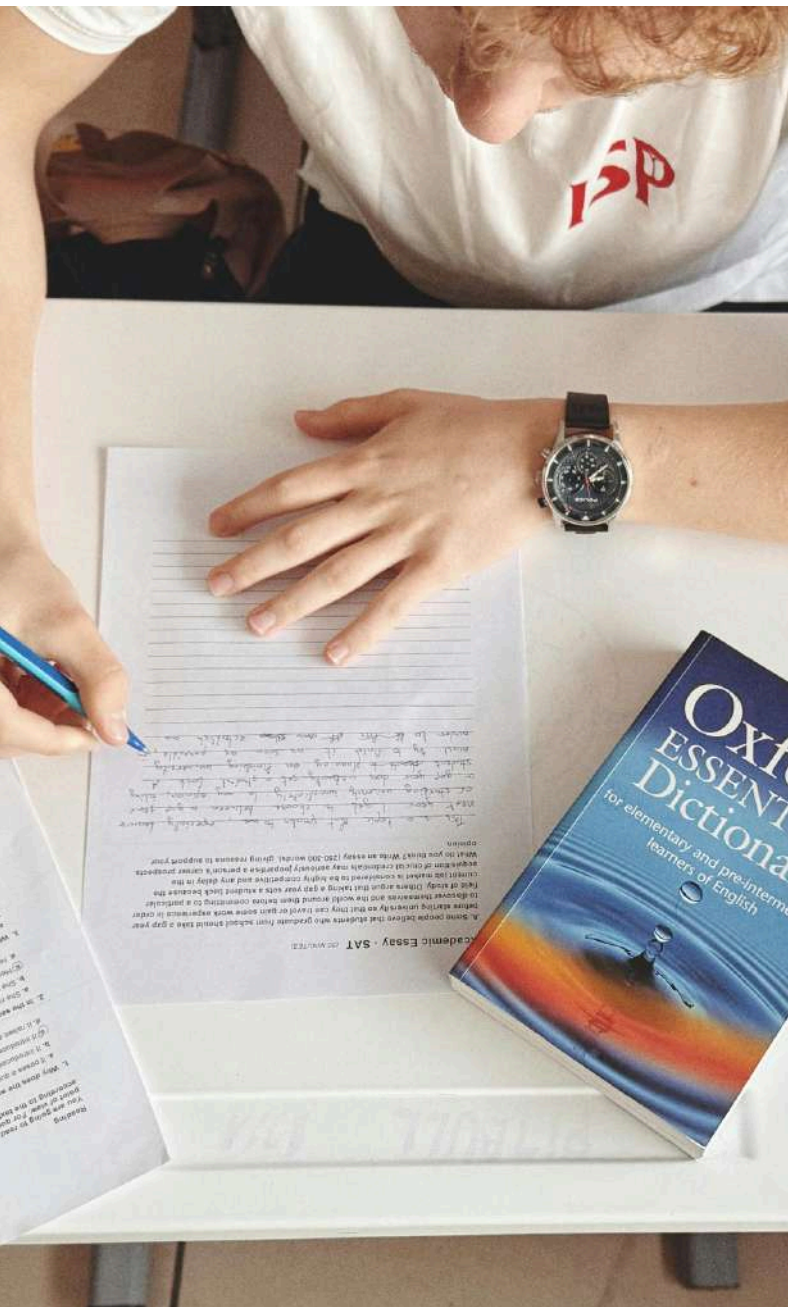
**Contact: [lkendall@decschool.co.uk](mailto:lkendall@decschool.co.uk)**

**Assessment: 100% Exam**



# GCSE ENGLISH LANGUAGE

The English Language specification is designed to inspire and motivate students to explore different elements of language. The two examinations are centered around challenging non-fiction and fictional texts. Students will be working to develop their interpretational and analytical skills over the course of the GCSE by reading a range of texts that have shaped and inspired generations of authors. The reading element will act as a springboard for students to develop their own writing and voice, with numerous opportunities for students to write a plethora of different texts from blogs to broadsheet articles.



How is the course assessed?

Paper 1: Explorations in Creative Reading and Writing

What is assessed?

Section A: Reading

- One literature fiction text

Section B: Writing

- Descriptive or narrative writing

How it is assessed:

- Written exam: 1 hour 45 minutes
- 80 marks
- 50% of GCSE

Paper 2: Writers Viewpoints and Perspectives

What is assessed?

Section A: Reading

- One non-fiction text and one literary non-fiction text

Section B: Writing

- Writing to present a viewpoint

How it is assessed:

- Written exam: 1 hour 45 minutes
- 80 Marks
- 50% of GCSE

Career Progression

Where to start?... every job will require some elements of English, but here are some for English lovers

- Digital copywriter
- Editorial Assistant
- English as a foreign language teacher
- Lexicographer
- Magazine Journalist
- Newspaper Journalist
- Publishing
- Copy-editor / proof reader
- Writer
- Academic Librarian
- Primary School teacher
- Records manager
- Blogger

**Exam Board: AQA**

**Faculty Leader: Mrs L Kendall**

**Contact: [lkendall@decschool.co.uk](mailto:lkendall@decschool.co.uk)**

**Assessment: 100% Exam**

# GCSE MATHEMATICS

Within GCSE Mathematics, topics are taught in progressively greater depth over the course of Key Stage 3 and Key Stage 4, GCSE outcomes may reflect or build upon subject content which is typically taught at Key Stage 3.

GCSE Mathematics provides a broad, coherent, satisfying and worthwhile course of study. It's also one of the best subjects to develop your analytical, research and problem-solving skills. Not only will studying Maths help give you the knowledge to tackle scientific, mechanical, coding and abstract problems, it will also help you develop logic to tackle everyday issues like planning projects, managing budgets and even debating effectively.



How is the course assessed?

100% exam, two tiers: higher/foundation, 3 papers

Paper 1: Non-Calculator 1hr 30 mins

Paper 2: Calculator 1hr 30 mins

Paper 3: Calculator 1hr 30 mins

Career Progression

GCSE Mathematics leads really well onto the following qualifications:

GCE AS or A Level Mathematics and GCE AS or A Level Further Mathematics

Level 3 qualifications, such as GCE in Biology, Physics, Chemistry, Economics, Geography, Psychology and Sociology

Vocational qualifications such as a BTEC in Business

Studying these subjects can lead to careers in the following:

- Economics
- Business Analysis
- Accountancy
- Sciences (Biology, Chemistry and Physics)
- Psychology
- Architecture
- Engineering
- Teaching/lecturing
- Medicine/doctor
- Operational Research

**Exam Board: Edexcel**

**Faculty Leader: Ms L Buckley**

**Contact: lbuckley@decschool.co.uk**

**Assessment: 100% Exam**

# GCSE COMBINED SCIENCE

Biology Paper 1: Cell Biology, Organization, Infection and Response, Bioenergetics

Biology Paper 2: Homeostasis, Inheritance, genetics and evolution, Ecology

Chemistry Paper 1: Atomic Structure and the Periodic Table, Bonding, structure and the properties of matter, Quantitative Chemistry, Chemical changes, Energy changes.

Chemistry Paper 2: Rate and extent of chemical changes, Organic chemistry, Chemical analysis, Chemistry of the atmosphere, Using resources

Physics Paper 1: Energy, Electricity, Particle Model of Matter, Atomic structure

Physics Paper 2: Forces, Waves, Magnetism and Electromagnetism



How is the course assessed?

Foundation tier will cover grades 1-1 to 5-5

Higher tier will cover grades 4-3 to 9-9

Six examinations (sat at the end of year 11)  
which count for 100% of the students' grade:

2 x Biology Papers (1 hour and 15 minutes  
each)

2 x Chemistry Papers (1 hour and 15 minutes  
each)

2 x Physics Papers (1 hour and 15 minutes  
each)

Career Progression

Science opens up a world of exciting career  
opportunities including:

- Engineering
- Astronomer
- Doctor
- Midwife
- Nursing
- Aviation
- Marine Biologist
- Vet
- Forensic Scientist
- Pharmacist
- Psychologist

**Exam Board: AQA**

**Faculty Leader: Mr B Feenan**

**Contact: [bfeenan@decschool.co.uk](mailto:bfeenan@decschool.co.uk)**

**Assessment: 100% Exam**



# GCSE TRIPLE SCIENCE

Biology Paper 1: Cell Biology, Organization, Infection and Response, Bioenergetics

Biology Paper 2: Homeostasis, Inheritance, genetics and evolution, Ecology

Chemistry Paper 1: Atomic Structure and the Periodic Table, Bonding, structure and the properties of matter, Quantitative Chemistry, Chemical changes, Energy changes.

Chemistry Paper 2: Rate and extent of chemical changes, Organic chemistry, Chemical analysis, Chemistry of the atmosphere, Using resources

Physics Paper 1: Energy, Electricity, Particle Model of Matter, Atomic structure

Physics Paper 2: Forces, Waves, Magnetism and Electromagnetism



How is the course assessed?

Foundation tier will cover grades 1-5

Higher tier will cover grades 4-9

Six examinations (sat at the end of Year 11)  
which count for 100% of the students' grade:

2 x Biology Papers (1 hour and 45 minutes  
each)

2 x Chemistry Papers (1 hour and 45 minutes  
each)

2 x Physics Papers (1 hour and 45 minutes  
each)

Career Progression

Science opens up a world of exciting career  
opportunities including:

- Engineering
- Astronomer
- Doctor
- Midwife
- Nursing
- Aviation
- Marine Biologist
- Vet
- Forensic Scientist

**Exam Board: AQA**

**Faculty Leader: Mr B Feenan**

**Contact: [bfeenan@decschool.co.uk](mailto:bfeenan@decschool.co.uk)**

**Assessment: 100% Exam**



# GCSE GEOGRAPHY

The subject content is divided into three units:

3.1: Living with the physical environment

3.2: Challenges in the human environment

3.3: Geographical applications including 2 opportunities for fieldwork.

You will study both human and physical geography throughout Year: 10 and 11, learning about key concepts and processes alongside examples and cases studies from the UK and wider world. Within the main two units of study, you will be able to practice geographical skills, as well as applying your understanding to a geographical issue and two fieldwork investigations.



How is the course assessed?

Paper 1: Living with the physical environment

1 hour 30 minutes

88 marks

35% of GCSE

Paper 2: Challenges in the Human environment

1 hour 30 minutes

88 marks

35% of GCSE

Paper 3 Geographical applications

1 hour 30 minutes

76 marks

30% of GCSE

Career Progression

Geography is great for any kind of career that involves the environment, planning, or collecting and interpreting data.

Popular careers for people with geography qualifications include:

- Town or transport planning
  - Surveying Conservation
  - Sustainability
  - Waste and water management
  - Environmental planning tourism
  - Weather Forecasting
  - Armed forces, Police, Government or Politics
  - Development or Aid work
  - Research organisations, law and business world
- also love the practical research skills that geographers develop
- Secondary teaching
  - Social Research

**Exam Board: AQA**

**Faculty Leader: Mrs N Elliott**

**Contact: [nelliott@decschool.co.uk](mailto:nelliott@decschool.co.uk)**

**Assessment: 100% Examination**

# GCSE HISTORY

The subject content is divided into 2 separate papers each with 2 units:

**Paper1 - Understanding the Modern World:**

**AB - Germany, 1890-1945: Democracy and Dictatorship**

**BC - Conflict and Tension between East and West, 1945-1972**

**Paper2 - Shaping the Nation:**

**AA - Britain: Health and the people c1000 to the present day**

**BA - Norman England c1066-1100**



**How is the course assessed?**

The GCSE History content comprises the following elements

**One period study: Germany 1890-1945:**

**Democracy and dictatorship.**

**One thematic study: Health and the people C 1000 until the Present Day**

**One wider world depth study: Conflict and Tension Between East and West 1945-1972**

**One British depth study including the historic environment: Norman England C1066 through 1100**

**Paper 1: Understanding the Modern World**

**2 hour exam**

**84 marks**

**50% of GCSE**

**Paper 2: Shaping the Nation**

**2 hour exam**

**84 marks**

**50% of GCSE**

**Career Progression**

Potential career pathways that could lead on from this course include:

- Law
- Politics
- Public Sector
- Business
- Marketing
- Journalism
- Economics
- Teaching
- Academia
- Insurance
- Social Research
- Archaeology and curation: Museums, Galleries, Archives, Libraries

**Exam Board: AQA**

**Faculty Leader: Miss N Elliott**

**Contact: [nelliott@decschool.co.uk](mailto:nelliott@decschool.co.uk)**

**Assessment: 100% Exam**

# GCSE STATISTICS

Statistics are everywhere from predicting the weather, deciding how much traffic there will be on a motorway to monitoring work-flow in the office. It is a huge part of everyday life, careers and further study. An understanding of data in the real world and how it can be used (or misused) can empower you and is relevant to everyone.

Our GCSE (9-1) Statistics qualification incorporates numerous examples of real-life data and contexts, which build skills that pupils will use in other subjects, such as Science and Geography. Based on the principles of the statistical enquiry cycle, students gain a rounded understanding of how to interpret and apply data to several scenarios, both across subjects and in the real world.



How is the course assessed?

100% exam, two tiers: higher/foundation, 2 papers

Paper 1: Calculator 1hr 30 mins

Paper 2: Calculator 1hr 30 mins

Career Progression

GCSE Statistics leads really well onto the following qualifications:

GCE AS or A Level Mathematics and GCE AS or A Level Further Mathematics

Level 3 qualifications, such as GCE in Biology, Economics, Geography, Psychology and Sociology

Vocational qualifications such as a BTEC in Business

Studying these subjects can lead to careers in the following:

- Economics
- Business Analysis
- Accountancy
- Psychology

**Exam Board: Edexcel**

**Faculty Leader: Ms L Buckley**

**Contact: lbuckley@decschool.co.uk**

**Assessment: 100% Examination**



# GCSE PSYCHOLOGY

The GCSE Psychology course covers a range of topics and acts as an exciting introduction to Psychology. Pupils will study topics such as criminal psychology, the psychology of memory, psychological problems such as schizophrenia and clinical depression, neuropsychology, social influence, human cognitive development, sleep and dreaming in addition to research methods (study of the scientific method within psychology). Key pieces of research within these areas will be studied and critiqued in addition to core theories within these fields.

Pupils will develop skills of analysis, evaluation, essay writing and data handling, and will be expected to apply some areas of mathematics to the study of research methods.



Potential career pathways that could lead on from this course:

Psychology is a scientific subject in which pupils develop key skills such as analysis, language and data handling that are applicable in almost any chosen pathway; it is a sought after subject because of this. Psychology at GCSE level prepares pupils well for study at A-level, and also for pathways in education, business, advertising & marketing, health care, and social work.

How is the course assessed?

The course is assessed solely through examination with two examinations at the end of Year 11, both weighted at 50%. Each examination lasts 1 hour and 30 minutes, and is a combination of short and medium tariff questions, with an extended essay question.

Career Progression

Some pupils may choose to pursue:

- A career within psychology working in the field of research education
- Mental Health
- Sport Psychology
- Forensic (criminal) psychology

**Exam Board: OCR**

**Faculty Leader: Mrs N Elliott**

**Contact: [nelliott@decschool.co.uk](mailto:nelliott@decschool.co.uk)**

**Assessment: 100% Examination**



# BTEC MUSIC PRACTICE

The Tech Award gives learners the opportunity to apply knowledge and skills in a practical way through exploration and development of techniques and styles. Musical skills will be developed through music creation, performance and music production, using realistic vocational contexts. Pupils will need to be disciplined in planning and time management. The course is delivered through a practical and skills-based approach to learning and assessment.

- Pupils will explore the techniques used in the creation of different musical products and investigate the key features of different musical styles.
- Pupils will develop technical, practical, personal and professional skills and specialise in at least two of the following areas: music performance, creating original music, music production.
- Finally, pupils will be given the opportunity to develop and present music in response to a given music brief through either a performance, a composition, or a production.

The Tech Award complements the learning from our KS3 programme by providing further in depth study and analysis of a broad repertoire of musical styles including popular genres from the 1950s to the present day, Western Classical styles, Jazz, world and fusion music, and music for TV and Film. Pupils opting to study this course will need to be a confident performer on your chosen instrument or voice.



## How is the course assessed?

You are required to complete and succeed in all three of the following components, across the qualification:

- Exploring Music Products and Styles  
Internally assessed, externally moderated component contributing to 30% of final grade
- Music Skills Development  
Internally assessed, externally moderated component contributing to 30% of final grade
- Responding to a Music Brief  
60-mark practical task worth 40% of final grade - synoptic assessment building on knowledge, understanding and skills acquired and developed in components 1 and 2

## Career Progression

The music industry is constantly evolving and offers many different and exciting new work opportunities. Below are some of the many careers available within the Music industry.

- Live sound engineer
- Music Promotion Manager
- Music Teacher
- Music Therapist
- Studio Sound Engineer
- TV or Film Sound Technician

**Exam Board: Pearson - Edexcel**

**Faculty Leader: Mr Jones**

**Contact: [gjones@decschool.co.uk](mailto:gjones@decschool.co.uk)**

**Assessment: 60% Coursework, 40% Exam**

# Level ½ Vocational Award Hospitality & Catering

Hospitality and catering will enable you to gain and develop comprehensive knowledge and understanding of the hospitality and catering industry including provision, health and safety, and food safety. You will also develop and apply knowledge and understanding of the importance of nutrition and how to plan nutritious menus. You will have the chance to develop your understanding of health and safety within the catering industry as well as investigating how the industry is structured.

**What skills will I develop?**

Hospitality and Catering will develop your knowledge and understanding of the Hospitality and Catering industry as well as providing you with opportunities to develop your practical skills within a kitchen setting. You will have the chance to explore the world of nutrition which can then be utilised in the dishes you will have the chance to create. You will also develop the skills needed to prepare, cook and present dishes. Finally, you will develop the skills needed to review your work effectively.



**How is the course assessed?**

**Unit 1:** The hospitality and catering industry. Written examination: 1 hour 20 minutes 40% of qualification

**Unit 2:** Hospitality and catering in action. Controlled assessment: approximately 12 hours 60% of qualification

Units will assess pupils on demonstrating knowledge and understanding from across the specification. Pupils will apply skills (including practical skills), knowledge and understanding in a variety of contexts and in planning and carrying out investigations and tasks. Pupils will analyse and evaluate information, making reasoned judgements and presenting conclusions.

**Career Progression**

**Further Education** Successful completion of WJEC Level 1/2 Vocational Hospitality and Catering can lead you to completing a Level 3 diploma in Hospitality at A-Level as well as a Bachelor of Hospitality Management degree level at university. Possible jobs and careers include:

- Artisan Baker
- Head Chef
- Catering Manager
- Food Manufacturing Inspector
- Food Scientist
- Hotel Manager
- Restaurant Manager
- Wedding Planner

**Exam Board: WJEC**

**Faculty Leader: Mrs S McNeill**

**Contact: [smcneill@decschool.co.uk](mailto:smcneill@decschool.co.uk)**



# GCSE TEXTILES

Further develop your designing and making skills using a range of materials and techniques to produce a wide range of products leading to the production of your final product in Year 11.



How is the course assessed?

Component 1: Design and Technology in the 21st Century

Written examination: 2 hours

50% of qualification

A mix of short answer, structured and extended writing questions assessing candidates' knowledge.

This component draws on knowledge gained since Year 7 and will include:

- Design and technology and our world
- Smart materials
- Electronic systems and programmable components
- Mechanical components and devices
- Materials

Pupils are required to study all of the content in these five areas, to ensure they have a broad knowledge and understanding of design and technology and that they are able to make effective choices in relation to which materials, components and systems to utilise within design and make activities.

Component 2: Design and make task

Non-exam assessment: 35 hours

50% of qualification

A sustained design and make task, based on a contextual challenge

The NEA task is a design brief set by the exam board at a later date. The task will allow students to display their practical skills to design and make a practical product using fibres and fabrics, or wood, metal and plastics. They will produce a sketchbook of evidence to support their creation alongside a formal portfolio.

Pupils will then develop In-depth knowledge and understanding of one further area. For pupils choosing the Textiles route this material will be Fibres and Fabrics; for those choosing the Product Design route the materials will be wood, metals and plastics.

Career Progression

Potential career pathways that could lead on from this course:

- Interior Design
- Fashion Design
- Fashion Retail

**Exam Board: Eduqas**

**Faculty Leader: Mrs S McNeill**

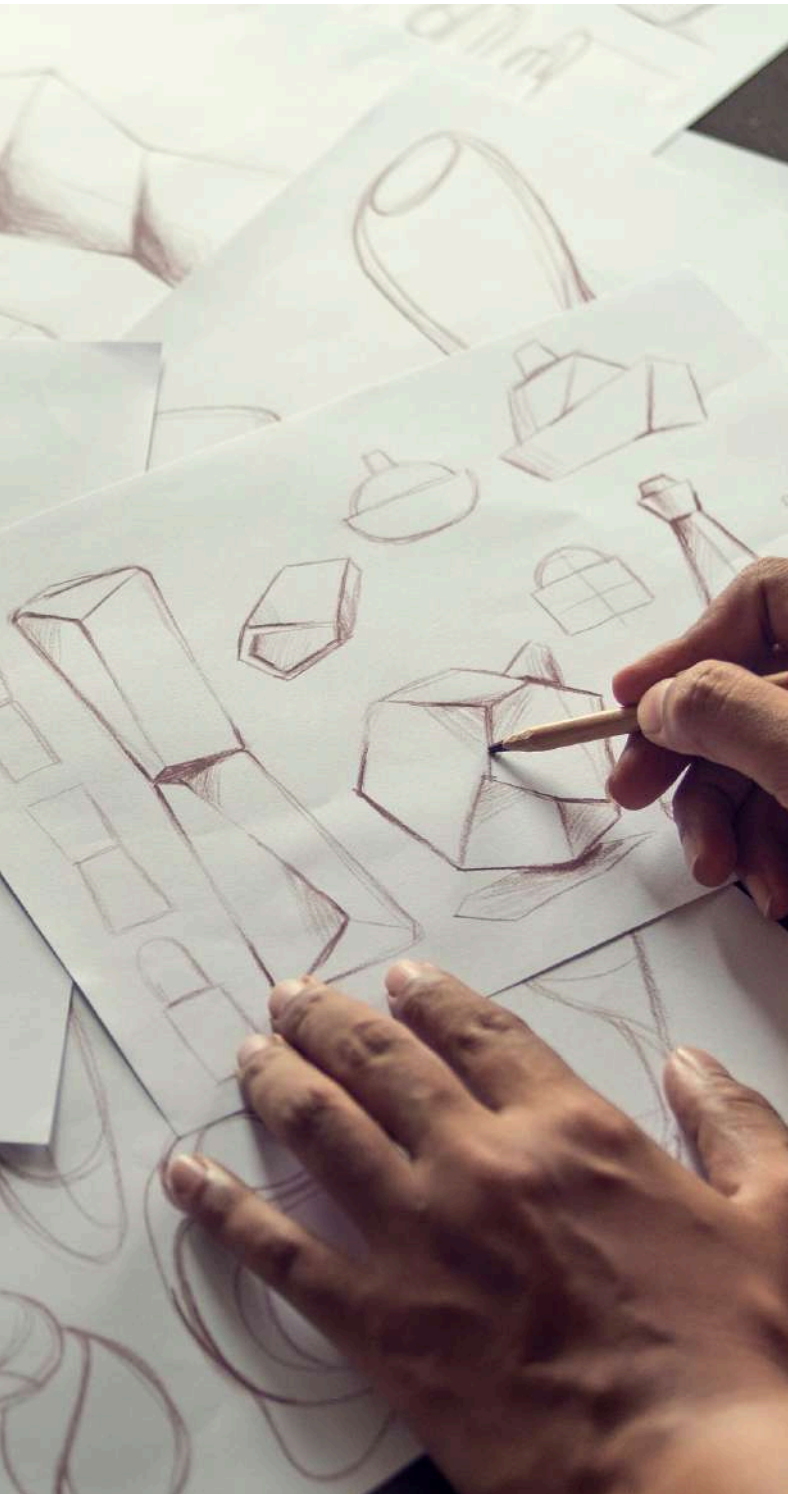
**Contact: [smcneill@decschool.co.uk](mailto:smcneill@decschool.co.uk)**

**Assessment: 50% Exam, 50%**

**Coursework**

# GCSE PRODUCT DESIGN

Further develop your designing and making skills using a range of materials and techniques to produce a wide range of products leading to the production of your final product in Year 11.



How is the course assessed?

Component 1: Design and Technology in the 21st Century

Written examination: 2 hours

50% of qualification

A mix of short answer, structured and extended writing questions assessing candidates' knowledge

This component draws on knowledge gained since Year 7 and will include:

- Design and technology and our world
- Smart materials
- Electronic systems and programmable components
- Mechanical components and devices
- Materials

Pupils are required to study all of the content in these five areas, to ensure they have a broad knowledge and understanding of design and technology and that they are able to make effective choices in relation to which materials, components and systems to utilise within design and make activities.

Pupils will then develop In-depth knowledge and understanding of one further area. For pupils choosing the Textiles route this material will be Fibres and Fabrics; for those choosing the Product Design route the materials will be wood, metals and plastics.

Component 2: Design and make task

Non-exam assessment: 35 hours

50% of qualification

A sustained design and make task, based on a contextual challenge

The NEA task is a design brief set by the exam board at a later date. The task will allow students to display their practical skills to design and make a practical product using fibres and fabrics, or wood, metal and plastics. They will produce a sketchbook of evidence to support their creation alongside a formal portfolio.

Career Progression

Potential career pathways that could lead on from this course:

- Building Trades
- Motor Vehicle Maintenance
- Engineering
- Industrial Product Design

**Exam Board: Eduqas**

**Faculty Leader: Mrs S McNeill**

**Contact: [smcneill@decschool.co.uk](mailto:smcneill@decschool.co.uk)**

**Assessment: 50% Exam, 50%**

**Coursework**



# GCSE RELIGIOUS STUDIES

The GCSE Religious Studies course covers a range of topics and allows students to access a broad range of ethical and religious topics. In year 10 pupils will cover Religion, peace and conflict through Christianity and Religion and Ethics through Islam in Year 11.

Both of these topics include a range of relevant and developing issues such as, in year 10; justice, crime, evil and suffering, punishment and the aims of punishment, treatment of criminals and the death penalty, peace and conflict, holy war, just war, weapons of mass destruction, Christian beliefs and living the Christian life.

In year 11; origins and values of the universe, the sanctity of life, abortion, life after death, euthanasia, issues in the natural world, marriage, sexual relationships, contraception, divorce, equality of men and women, gender prejudice and discrimination, Muslim beliefs and living the Muslim life.



## How is the course assessed?

The course is assessed solely through examination with two examinations at the end of Year 11, both weighted at 50%. Each examination lasts 1 hour and 45 minutes, and is a combination of short and medium tariff questions, with an extended essay question.

## Career Progression

Potential career pathways that could lead on from this course:

Religious Studies is an awarding subject in which pupils develop key skills such as evaluation, interpretation, ethical and moral decision making that can be applicable in almost any chosen pathway; it is a sought-after subject because of this. Religious Studies at GCSE level prepares pupils well for their studies at A-Level and beyond.

- A career within Law
- Education
- Mental Health
- Doctor/Nurse

**Exam Board: Edexcel**

**Faculty Leader: Miss N Elliott**

**Contact: [nelliott@decschool.co.uk](mailto:nelliott@decschool.co.uk)**

**Assessment: 100% Exam**

# GCSE PHYSICAL EDUCATION



How is the course assessed?

- Practical performance (assessed in 3 sports: 1 Individual, 1 Team and then optional 3rd choice)
- Coursework (Personal Exercise Programme – involving planning, conducting & evaluating)
- Written exam (Component 1: Fitness & Body Systems is a 90-mark exam worth 36%; Component 2: Health and Performance is a 70-mark exam worth 24%)

- You will look at the factors underpinning physical activity and sport performance.
- You will investigate applied anatomy and physiology, movement analysis and physical training so that you can use this knowledge to analyse and evaluate performance and devise informed strategies for improving and optimising your own practical performance.
- You will develop your knowledge of the contribution that physical activity and sport make to health, fitness and well-being and how these can impact your own performance.
- You will be introduced to sports psychology, with a focus on skill development, through relevant practice, guidance and feedback, and then apply this to your improving your own learning in practical situations.
- You will learn about how key socio-cultural influences can affect people's involvement in physical activity and sport, as well as the impact of commercialisation and sporting behaviour.

Career Progression

Potential career pathways that could lead on from this course:

- PE Teacher
- Physiotherapist
- Sports Coach
- Fitness Instructor
- Sport and Exercise Psychologist
- Sports Dietician/nutritionist
- Performance Sports Scientist
- Sports Lawyer
- Sports Commentator
- Sports Development Officer

**Exam Board: Pearson - Edexcel**

**Faculty Leader: Mr G Jones**

**Contact: [gjones@decschool.co.uk](mailto:gjones@decschool.co.uk)**

**Assessment: 40% Practical, 60% Exam**



# OCR NATIONAL CERTIFICATE SPORTS STUDIES

The Cambridge Nationals in Sport Studies qualification takes a more sector-based focus, whilst also encompassing some core sport/physical education themes. Learners have the opportunity to apply theoretical knowledge about different types of sport and physical activity, skills development and sports leadership to their own practical performance. They will learn about contemporary issues in sport such as funding, participation, ethics, role models, and sport and the media. Learners will develop an appreciation of the importance of sport both locally and nationally, different ways of being involved in sport and of how this shapes the sports industry.



How is the course assessed?

- Contemporary Issues in Sport (40% Exam)
- Practical sports performance and leadership (40%)
- Sport and the Media (20% Controlled Assessment)

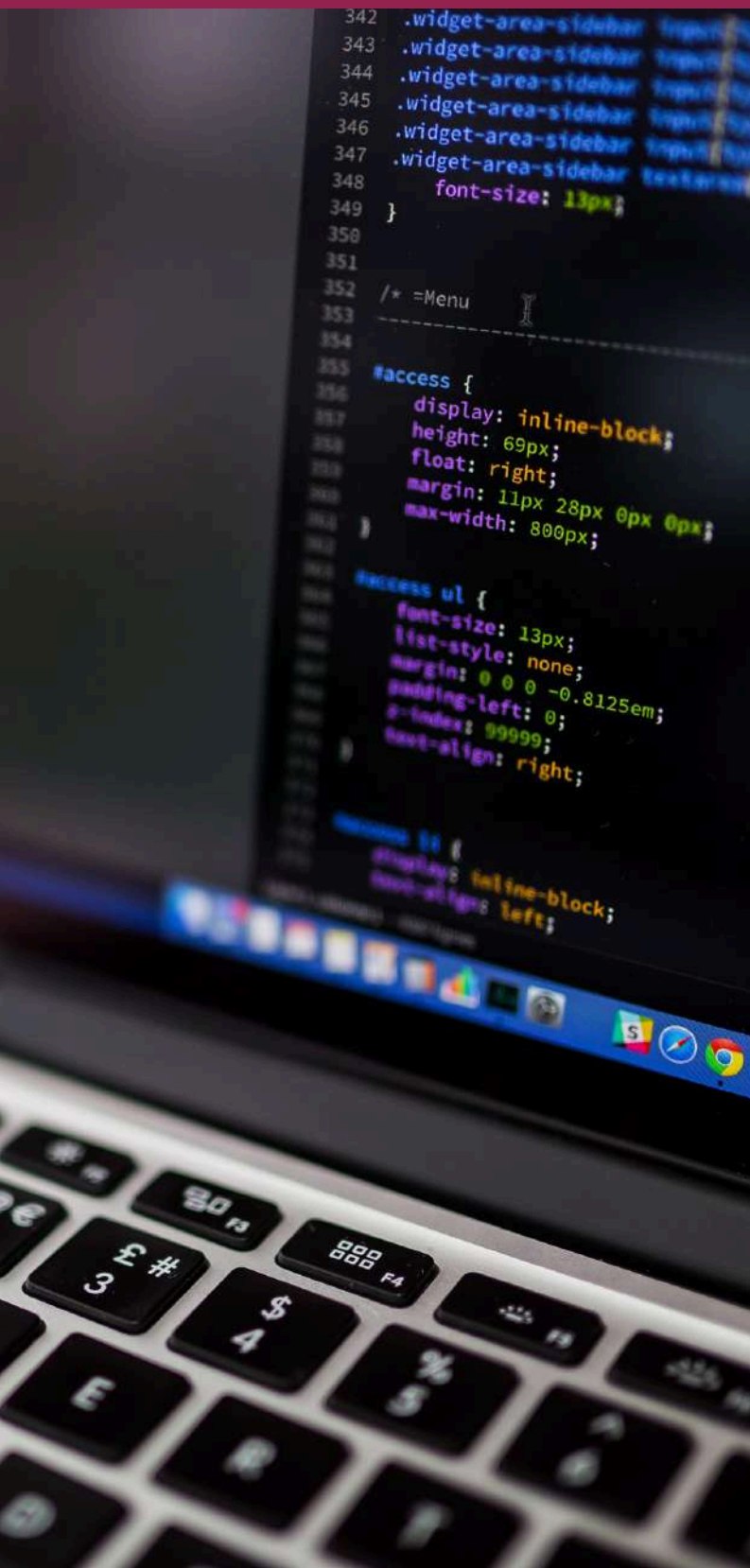
Career Progression

Potential career pathways that could lead on from this course:

- PE Teacher
- Sports Coach
- Fitness Instructor
- Performance Sports Scientist
- Outdoor Activities Instructor
- Sports Development Officer

**Exam Board: OCR**

# GCSE COMPUTER SCIENCE



How is the course assessed?

External Exam 1 – Computer Systems – 50% of the total GCSE

External Exam 2 – Computational Thinking – 50% of the total GCSE Controlled Assessment – Programming Project

Year 10

- September to December, students to learn examination content to Exam 1 and sit past paper at the end.
- January to July, students will learn and practice Python programming. Students will complete the Programming Project. During this time students will have revision/refresher lessons on the content they covered (in the Autumn) for Exam 1.

Year 11

- September to December, students to learn examination content to Exam 2 and sit past paper at the end.
- December to May, students to revise examination theory to prepare for sitting the two external exams in May/June.

Career Progression

Potential career pathways that could lead on from this course:

- Programming
- IT Technician
- Gaming
- Anything to do with Computers and logical thinking

**Exam Board: OCR**

**Faculty Leader: Mr C Seager**

**Contact: [cseager@decschool.co.uk](mailto:cseager@decschool.co.uk)**

**Assessment: 100% Examination**



# GCSE ART AND DESIGN



How is the course assessed?

Unit 1: Portfolio=60% of overall grade

Unit 2: Externally set assignment from OCR=40% of overall grade

All units are assessed on: Developing art skills through the use of material experimentation, focused technique lessons, artist research, designing and making final pieces.

Externally set task: In Year 11, students will study an externally set task set by OCR that challenges their skills and knowledge. Students will research, develop, design and make and finally undertake a 10-hour exam in the art room. Students will be assessed on the quality of their ideas, research, technique and processes whilst creating their final piece.

GCSE Art and Design is designed to build on the skills and knowledge you developed at Key Stage 3 and take them to a new level. As an art student, you will explore different materials and techniques including drawing, painting, printing and sculpting. You will also research, study and investigate the work of many other contemporary and historical artists.

What skills will I develop?

GCSE Art allows you to build and develop creative and imaginative skills that can be applied to most professional sectors. You will learn how to experiment, take risks, design and develop technical skills in the field of Art and Design. You will explore traditional art making processes as well as more contemporary techniques, relevant to today's art world.

Career Progression

Further Education Successful completion of GCSE Art can lead you to AS/A2 Art Courses and Level 3 Diplomas, Art Foundation courses at sixth forms, colleges and university.

Career Opportunities: Studying Art at GCSE does not mean that you are only suited to become an artist, employers will be able to see that you are able to think creatively and make creative solutions to interesting problems.

Possible jobs and careers include:

Fine Artist, Graphic Designer, Gallery Curator, Games Designer, Illustrator, Photographer, Theatre Set Designer, Furniture Designer, Clothing Designer.

**Exam Board: OCR**

**Faculty Leader: Mrs S McNeill**

**Contact: [smcneill@decschool.co.uk](mailto:smcneill@decschool.co.uk)**

**Assessment: 60% Portfolio, 40%**

**External Task**

# BTEC HEALTH AND SOCIAL CARE



How is the course assessed?

3 Units of work will be covered, two are internally assessed, and one is an examined unit.

- Unit 1: Human lifespan development- internal
- Unit 2: Health and Social Care Services and Values- internal
- Unit 3: Health & Well-being- externally examined unit.

The qualification has three components that focus on the assessment of knowledge, skills and practices. These are all essential to developing a basis for progression and therefore learners need to demonstrate attainment across all components in order to achieve the qualification. The components are strongly interrelated and they are best seen as part of an integrated whole rather than totally distinct study areas.

Components 1 and 2 are assessed through internal assessment. This style of assessment promotes deep learning through ensuring the connection between knowledge and practice.

The components focus on:

- knowledge and understanding of human growth and development knowledge and understanding of how people deal with major life events knowledge and understanding of health and social care services
- practical demonstration of care values
- together with the ability to reflect on own performance.

Component 3: Health and Wellbeing requires learners to assess an individual's health and wellbeing and use this assessment to create a health and wellbeing improvement plan.

The design of this external assessment ensures that there is sufficient stretch and challenge,

The external assessment is based on a key task that requires learners to demonstrate that they can identify and use effectively an appropriate selection of skills, techniques, concepts, theories and knowledge from across the whole qualification in an integrated way.

Career Progression

- Social Work
- Early year's education
- Primary School teacher
- Nursing
- Midwifery

**Exam Board: Pearson**

**Faculty Leader: Miss N Elliott**

**Contact: [nelliott@decschool.co.uk](mailto:nelliott@decschool.co.uk)**

**Assessment: 60% Coursework, 40% Exam**



# BTEC CREATIVE MEDIA



How is the course assessed?

The course is made up of two coursework components, internally marked, and one external assessment: Component 1: Exploring Media Products (30%, Internally Assessed Assignment)

Aim: learn about the sector and investigate media products across the following sub-sectors:

- audio/moving image (TV programmes, films, video shorts, animations, radio broadcasts)
- publishing (newspapers, magazines, books, e-magazines, comics)
- interactive (websites, mobile applications, mobile games, video games, online games).

Component 2: Developing Digital Media Production Skills (30%, Internally Assessed Assignment)

Aim: develop technical skills and techniques in the chosen discipline of moving image products (short films)

Component 3: Create a Media Product in Response to a Brief (40%, Externally Assessed)

Aim: apply digital skills and techniques by responding to a digital media brief.

The UK's creative industries as a whole are now worth over £115 billion per year to the UK economy. Working in the creative media industry involves a wide range of practical processes, skills and techniques – from broadcast media to increasingly interactive products and platforms. Digital technology continues to evolve, however, what never changes is the power of media products to enthrall, intrigue and affect audiences.

The course will cover a number of aspects, such as analysing film, film trailers, film posters and websites, understanding the production techniques involved. Following on from learning about these techniques, students will put them into practice to demonstrate they can produce an effecting moving image product, which will take the form of a short horror film. Finally, students will be given a scenario in which they must discuss audiences, consider research and produce a moving image product to meet the needs of the brief.

## Career Progression

Future employment could be any number of areas, some of which may not even exist at the moment; such is the pace of change in the creative industries. Some considerations may be:

- TV/Film Producer
- Camera Operator
- Games Designer
- Web Developer
- App Developer
- Broadcast Journalist

The creative industry is huge, so there are many more possibilities.

**Exam Board: Pearson**

**Faculty Leader: Mr C Seager**

**Contact: [cseager@decschool.co.uk](mailto:cseager@decschool.co.uk)**

**Assessment: 60% Coursework, 40% Exam**

# BTEC

# PERFORMING ARTS (DANCE)

The Tech Award in Performing Arts gives you the opportunity to develop sector-specific applied knowledge and skills through realistic vocational contexts. You will have the opportunity to develop applied knowledge and skills in the following areas:

- A range of performance/production styles, and the key features that contribute to these such as practitioners' roles, responsibilities, skills and techniques.
- Reflective practice that allow learners to respond to feedback and identify areas for improvement using relevant presentation techniques, for example a logbook.
- Responding to a brief and stimulus, developing group workshop performance for a selected audience.

The Tech Award complements the learning from our KS3 programme by providing further in-depth analysis of Dance theoretical knowledge to improve performance of participants. The course also explores the dance sector-specific skills through exploring and applying their knowledge to realistic contexts. Therefore, this makes the course suitable for those wanting to obtain a job within the performing arts sector, encouraging learners to develop key skills such as reproducing repertoire, responding to a stimulus and developing an understanding of the roles, responsibilities and skills-required of those working in the sector.



How is the course assessed?

You are required to complete and succeed in all three of the following components, across the qualification:

Component 1: Exploring the Performing Arts (internally assessed, externally moderated component contributing to 30% of final grade- 60 marks).

Component 2: Developing Skills and Techniques in the Performing Arts (internally assessed, externally moderated component contributing to 30% of final grade- 60 marks).

Component 3: Responding to a Brief (60-mark externally marked assessment worth 30% of final grade – synoptic assessment that requires the effective use of appropriate skills, techniques, concepts, theories and knowledge from across the whole qualification in an integrated way).

Career Progression

- Dancer
- Performer
- Dance Movement Psychotherapist
- Dance Choreographer
- Community Arts Worker

**Exam Board: Pearson**

**Faculty Leader: Mr G Jones/Miss E Hart**

**Contact: [enquiries@decschool.co.uk](mailto:enquiries@decschool.co.uk)**



# GCSE FRENCH

The GCSE French course consists of four units based on the following skills:

- Speaking (25%)
- Listening (25%)
- Reading (25%)
- Writing (25%)

**Key Subject Aims:** The new specification for first examination in 2026 in MFL is designed to develop confidence in, and a positive attitude towards learning a language. Pupils will develop their ability to communicate independently about subjects that are meaningful and interesting to them, as well as building confidence, broadening their horizons and developing new ways of seeing the world. Pupils should become familiar with the culture of the countries where the language is spoken.



**How is the course assessed?**

There are 4 exam papers for Modern Foreign Languages as described above, each worth 25% of the final grade. All exams take place at the end of Year 11 and are externally assessed by the exam board. Speaking exams are conducted by pupils' normal teacher. Languages are available at Foundation tier (Grades 1-5) and Higher tier (Grades 4-9).

**Assessment tasks include:**

All questions on written papers are asked in English.

- Reading aloud in the foreign language, a role play and responding to short questions
- Listening and reading passages in the foreign language and answering questions in English
- Responding to bullet points in English in written form

**Suitability**

The course is suitable for pupils who wish to have the ability to communicate and understand a culture other than their own. At Dame Elizabeth, languages are an important part of our curriculum, designed to give pupils the best opportunities to be successful in the future. Languages form part of the English Baccalaureate (EBacc) and complement other subjects such as Geography, History and Business Studies.

**Career Progression**

This course supports many careers which require face to face and written communication with international companies. Those wishing to move into careers in business or industry, education and any career which requires study at University level would benefit from studying a foreign language to GCSE.

**Exam Board: Edexcel**

**Assessment: 100% Exam**

**Faculty Leader: Miss Thompson**

**Contact: [enquiry@decschool.co.uk](mailto:enquiry@decschool.co.uk)**

# GCSE GERMAN

The GCSE German course consists of four units based on the following skills:

- Speaking (25%)
- Listening (25%)
- Reading (25%)
- Writing (25%)

**Key Subject Aims:** The new specification for first examination in 2026 in MFL is designed to develop confidence in, and a positive attitude towards learning a language. Pupils will develop their ability to communicate independently about subjects that are meaningful and interesting to them, as well as building confidence, broadening their horizons and developing new ways of seeing the world. Pupils should become familiar with the culture of the countries where the language is spoken.



**How is the course assessed?**

There are 4 exam papers for Modern Foreign Languages as described above, each worth 25% of the final grade. All exams take place at the end of Year 11 and are externally assessed by the exam board. Speaking exams are conducted by pupils' normal teacher. Languages are available at Foundation tier (Grades 1-5) and Higher tier (Grades 4-9).

**Assessment tasks include:**

All questions on written papers are asked in English.

- Reading aloud in the foreign language, a role play and responding to short questions
- Listening and reading passages in the foreign language and answering questions in English
- Responding to bullet points in English in written form

**Suitability**

The course is suitable for pupils who wish to have the ability to communicate and understand a culture other than their own. At Dame Elizabeth, languages are an important part of our curriculum, designed to give pupils the best opportunities to be successful in the future. Languages form part of the English Baccalaureate (EBacc) and complement other subjects such as Geography, History and Business Studies.

**Career Progression**

This course supports many careers which require face to face and written communication with international companies. Those wishing to move into careers in business or industry, education and any career which requires study at University level would benefit from studying a foreign language to GCSE.

**Exam Board: Edexcel**

**Assessment: 100% Exam**

**Faculty Leader: Miss Thompson**

**Contact: [enquiry@decschool.co.uk](mailto:enquiry@decschool.co.uk)**



**Dame Elizabeth**  
Cadbury School